

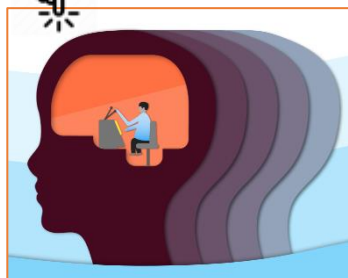


5 EEF GUIDANCE REPORTS TO SUPPORT PLANNING AT THIS TIME

GUIDANCE FROM BEST EVIDENCE TO SUPPORT NEXT STEPS PLANNING & PRACTICE



CLICK IMAGE FOR HOMEPAGE REPORT, SUMMARY & RESOURCES + (HERE) FOR NEW COVID 19 RESOURCE

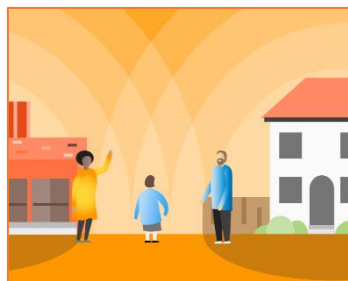


METACOGNITION AND SELF-REGULATED LEARNING

7 RECOMMENDATIONS FOR TEACHING SELF-REGULATED LEARNING & METACOGNITION. ESSENTIAL GUIDANCE TO SUPPORT DEVELOPMENT OF METACOGNITIVE STRATEGIES FOR PUPILS, IN SCHOOL AND AT HOME.

NEW COVID 19 RESOURCES:

- HOME LEARNING APPROACHES: PLANNING FRAMEWORK ([HERE](#))
- HOME LEARNING APPROACHES: PLANNING FRAMEWORK EXAMPLES ([HERE](#))

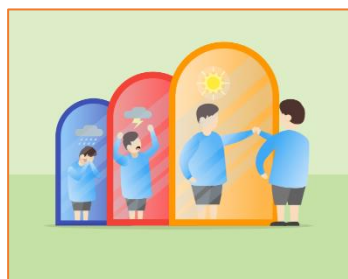


WORKING WITH PARENTS TO SUPPORT CHILDREN'S LEARNING

4 RECOMMENDATIONS ON WORKING WITH PARENTS TO SUPPORT THEIR CHILD'S LEARNING. VALUABLE GUIDANCE AND TOOLS FOR RIGHT NOW.

NEW COVID 19 RESOURCES:

- COMMUNICATING EFFECTIVELY WITH FAMILIES: GUIDE FOR SCHOOLS ([HERE](#))
- SUPPORTING PARENTS AND CARERS AT HOME ([HERE](#))
- PARENTS AND CARERS ENGAGING IN HOME LEARNING: A CHECKLIST FOR SCHOOLS ([HERE](#))



IMPROVING SOCIAL AND EMOTIONAL LEARNING IN PRIMARY SCHOOLS

6 RECOMMENDATIONS FOR IMPROVING SOCIAL AND EMOTIONAL LEARNING IN PRIMARY SCHOOLS (WITH MUCH TO OFFER KS3 TOO)

NEW COVID 19 RESOURCES:

- SUPPORTING HOME LEARNING ROUTINES: PLANNING THE DAY ([HERE](#))
- SUPPORTING DAILY ROUTINES DURING SCHOOL CLOSURES ([HERE](#))

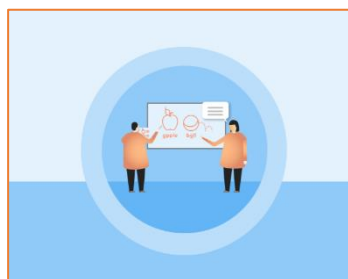


PUTTING EVIDENCE TO WORK - A SCHOOL'S GUIDE TO IMPLEMENTATION

A GUIDE TO IMPLEMENTATION APPLICABLE TO ANY SCHOOL IMPROVEMENT DECISION, ESPECIALLY IN SUCH UNCHARTED TIMES.

NEW COVID 19 RESOURCES:

- BEST EVIDENCE ON SUPPORTING PUPILS TO LEARN REMOTELY: RAPID EVIDENCE KEY FINDINGS SUMMARY ([HERE](#))



MAKING BEST USE OF TEACHING ASSISTANTS

7 RECOMMENDATIONS TO HELP PRIMARY AND SECONDARY SCHOOLS MAKE THE BEST USE OF TAS. #3 IN PARTICULAR: HELPING PUPILS DEVELOP INDEPENDENT LEARNING SKILLS/MANAGE OWN LEARNING.

NEW COVID 19 RESOURCES:

- 10 RESOURCES DESIGNED TO BE SHARED WITH PARENTS TO SUPPORT LITERACY AND LEARNING ... GREAT FOR TAS TO UTILISE IN SCHOOL TOO ([HERE](#))